



'HOME ON THE RANGE' BILLINGS, MONTANA

'Home on the Range' reinvents a 8,300 SF windowless 1940 concrete block grocery store in Billings' Southside neighborhood into a professional office building that demonstrates sustainable technologies for the Northern Plains Resource Council and the Western Organization of Resource Councils.

Green building strategies include: a well-insulated shell; extensive daylighting through new clerestory monitors and light shelves at new perimeter windows; energy-efficient radiant floor heating and evaporative cooling; abundant use of salvaged, recycled-content, locally available, and low-VOC materials; construction and demolition waste diversion exceeding 90%; 10kW photovoltaic system and solar hot water panel; composting toilets; permeable pavement (first permitted use in Billings); and drought-tolerant native landscaping.

The building uses only 21% for heating, cooling, and lighting as compared to new office building model energy codes. The project has received LEED Platinum certification from the US Green Building Council.

BEFORE

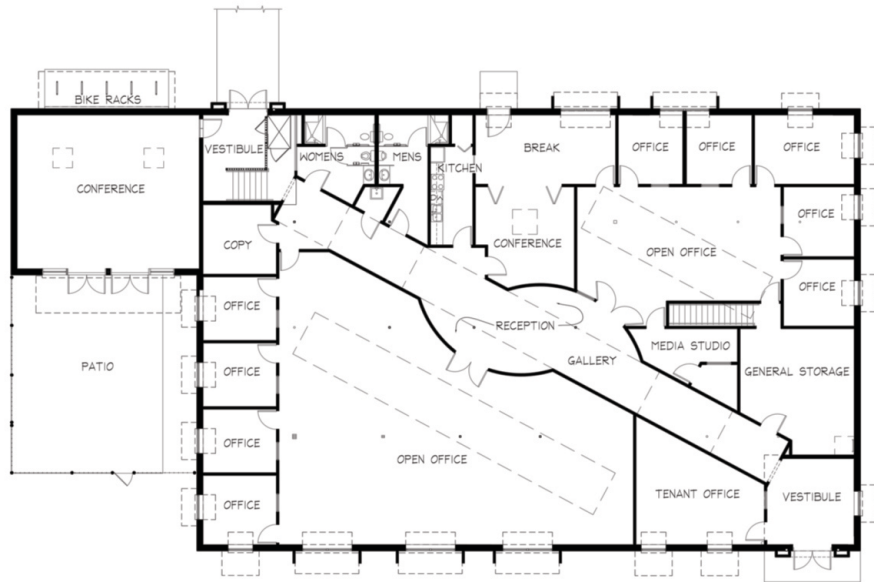


AFTER



Reference Contact:

Teresa Erickson
Northern Plains Resource Council
406.248.1154
220 South 27th Street
Billings, MT 59101



FIRST FLOOR PLAN



OFFICE



NORTH FACADE AND NATIVE LANDSCAPING



GALLERY



SOUTH FACADE AND NATIVE LANDSCAPING